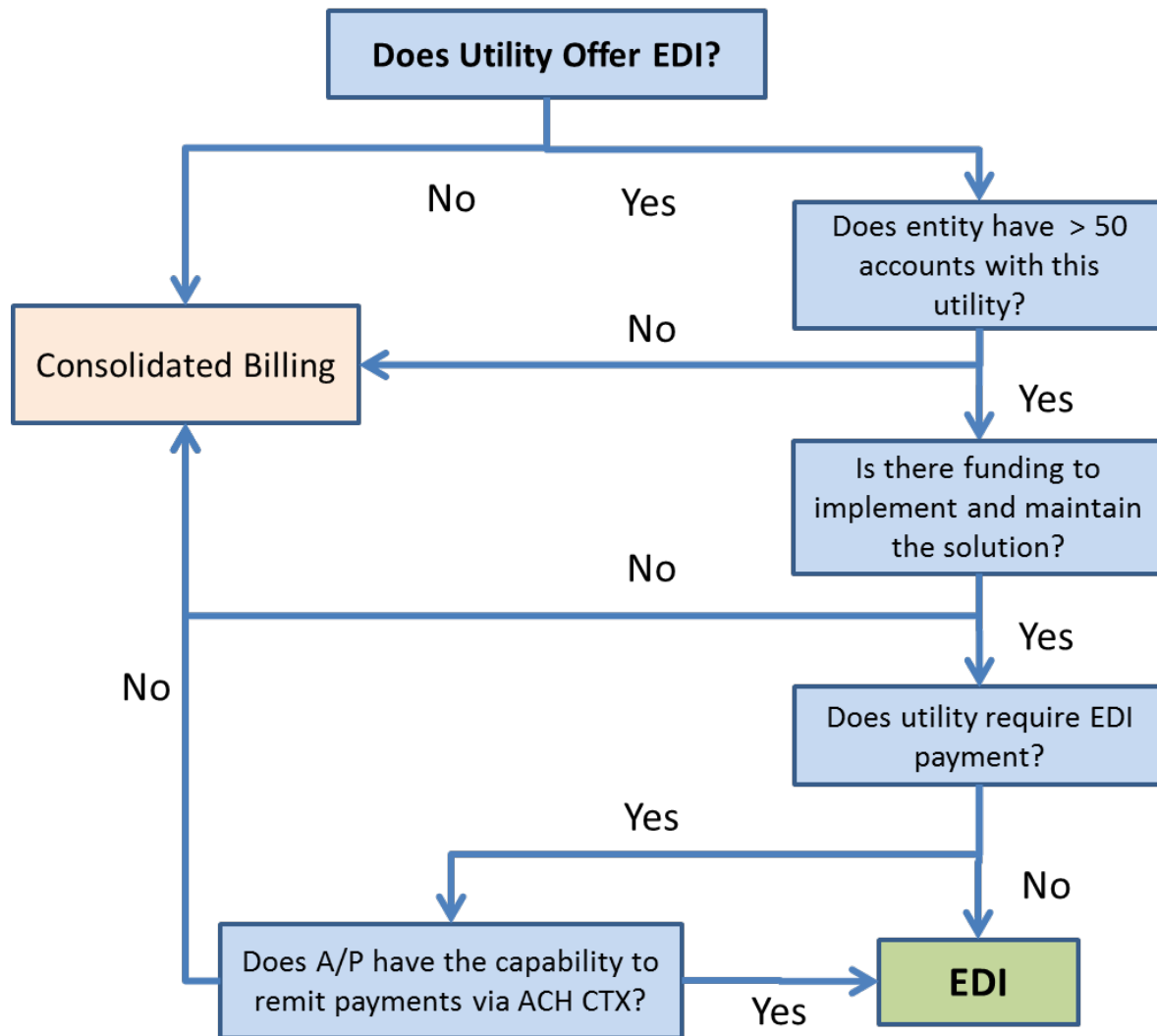


### Tool 4.4 Electronic Data Interchange (EDI) Feasibility Assessment

This flow chart can assist you in determining whether EDI is a feasible utility-data access solution for your organization.

## EDI Feasibility Assessment



**Figure 4-4. EDI feasibility assessment flowchart.**

*ACH = Automated Clearing House (ACH) CTX format*

*A/P = Accounts Payable*